

K.L.E. Society's
LINGARAJ COLLEGE, BELAGAVI
(Autonomous)

Parents Feedback on Curriculum
(2021-22)

Methodology :

* Primary Data - Questionnaire Method

* Statistical Tools used : Weightage Method

SL. No.	Particulars	Response					Weighted Response				Sum of Weightage (ΣRW)	Score ($\Sigma RW/N$)
		SA	A	DA	SDA	Total (N)	4	3	2	1		
1	The curriculum is up-to-date, need based & application oriented.	65	34	1	0	100	325	136	3	0	464	4.11
2	Whether syllabus is focusing on employability	64	35	1	0	100	320	140	3	0	463	4.10
3	Whether syllabus is focusing on entrepreneurship	56	32	11	1	100	280	128	33	2	443	3.92
4	Whether syllabus is focusing on skill development	59	40	1	0	100	295	160	3	0	458	4.05
5	Syllabus equipped me with necessary technical skills to face the industry	60	35	5	0	100	300	140	15	0	455	4.03
6	Curriculum encourages holistic development of the students	53	45	2	0	100	265	180	6	0	451	3.99
7	Learning objectives are clear and appropriate to the needs of the students	59	39	2	0	100	295	156	6	0	457	4.04
8	Curriculum covers issues like Human Values, Gender Equity, Professional Ethics, Environment and Sustainability	68	28	4	0	100	340	112	12	0	464	4.11
9	Interest is generated by teacher while teaching	68	31	1	0	100	340	124	3	0	467	4.13
10	Curriculum helps to develop skills related to face competitive exams	50	49	1	0	100	250	196	3	0	449	3.97

Note: SA= Strongly Agree

A= Agree

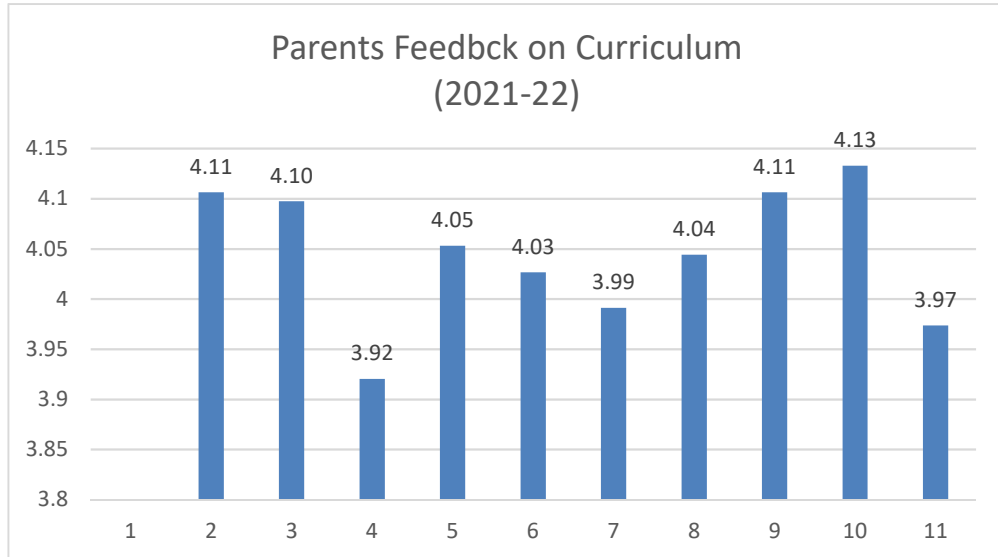
DA=Disagree

SDA= Strongly Disagree


Co-ordinator IQAC
LINGARAJ COLLEGE
BELAGAVI




PRINCIPAL
LINGARAJ COLLEGE
BELAGAVI



College
 Co-ordinator IQAC
 LINGARAJ COLLEGE
 BELAGAVI



[Signature]
 PRINCIPAL
 LINGARAJ COLLEGE
 BELAGAVI

K.L.E. Society's
LINGARAJ COLLEGE, BELAGAVI
(Autonomous)

Teachers/BOS Members/Academic Peer Team Feedback on Curriculum
(2021-22)

Methodology :

* Primary Data - Questionnaire Method

* Statistical Tools used : Weightage
Method


SL. No.	Particulars	Response					Weighted Response				Sum of Weightage (Σ RW)	Score (Σ RW/N)
		SA	A	DA	SDA	Total (N)	4	3	2	1		
1	Curriculum helps to develop thinking ability	34	35	8	0	77	170	140	24	0	334	2.96
2	Curriculum helps in developing communication skills	26	41	10	0	77	130	164	30	0	324	2.87
3	Curriculum enhances Analytical skills	57	19	1	0	77	285	76	3	0	364	3.22
4	Curriculum focuses on multi-skill development	41	30	6	0	77	205	120	18	0	343	3.04
5	Curriculum emphasizes on global competencies	48	28	1	0	77	240	112	3	0	355	3.14
6	Curriculum builds employability and Entrepreneurial attitude amongst the students	59	15	3	0	77	295	60	9	0	364	3.22
7	Curriculum boosts belongingness with Community	50	23	4	0	77	250	92	12	0	354	3.13
8	Curriculum has the potential in developing the habit of self-learning among the students	40	34	3	0	77	200	136	9	0	345	3.05

Note: SA= Strongly Agree

A= Agree

DA=Disagree

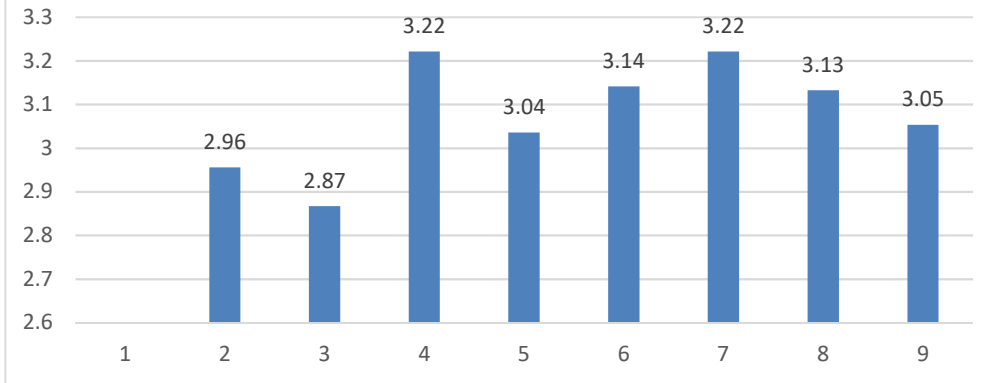
SDA= Strogly Disagree


Co-ordinator IQAC
LINGARAJ COLLEGE
BELAGAVI




PRINCIPAL
LINGARAJ COLLEGE
BELAGAVI

Teachers/BOS Members/Academic Peer Feedback
on Curriculum
(2021-22)




Co-ordinator IQAC
LINGARAJ COLLEGE
BELAGAVI




PRINCIPAL
LINGARAJ COLLEGE
BELAGAVI

K.L.E. Society's
LINGARAJ COLLEGE, BELAGAVI
(Autonomous)

Students Feedback on Curriculum
(2021-22)

Methodology :

* Primary Data - Questionnaire Method

* Statistical Tools used : Weightage Method

SL. No.	Particulars	Response					Weighed Response				Sum of Weightage (ΣRW)	Score ($\Sigma RW/N$)
		SA	A	DA	SDA	Total (N)	4	3	2	1		
1	The curriculum is up-to-date, need based & application oriented.	67	85	1	0	153	335	340	3	0	678	6.00
2	Whether syllabus is focusing on employability	51	96	6	0	153	255	384	18	0	657	5.81
3	Whether syllabus is focusing on entrepreneurship	59	78	15	1	153	295	312	45	2	654	5.79
4	Whether syllabus is focusing on skill development	83	68	1	1	153	415	272	3	2	692	6.12
5	Syllabus equipped me with necessary technical skills to face the industry	50	101	2	0	153	250	404	6	0	660	5.84
6	Curriculum encourages holistic development of the students	64	85	4	0	153	320	340	12	0	672	5.95
7	Learning objectives are clear and appropriate to the needs of the students	62	87	4	0	153	310	348	12	0	670	5.93
8	Curriculum covers issues like Human Values, Gender Equity, Professional Ethics, Environment and Sustainability etc.	79	74	0	0	153	395	296	0	0	691	6.12
9	Interest is generated by teacher while teaching	78	69	4	2	153	390	276	12	4	682	6.04
10	Curriculum helps to develop skills related to face competitive exams	66	68	16	3	153	330	272	48	6	656	5.81

Note: SA= Strongly Agree

A= Agree

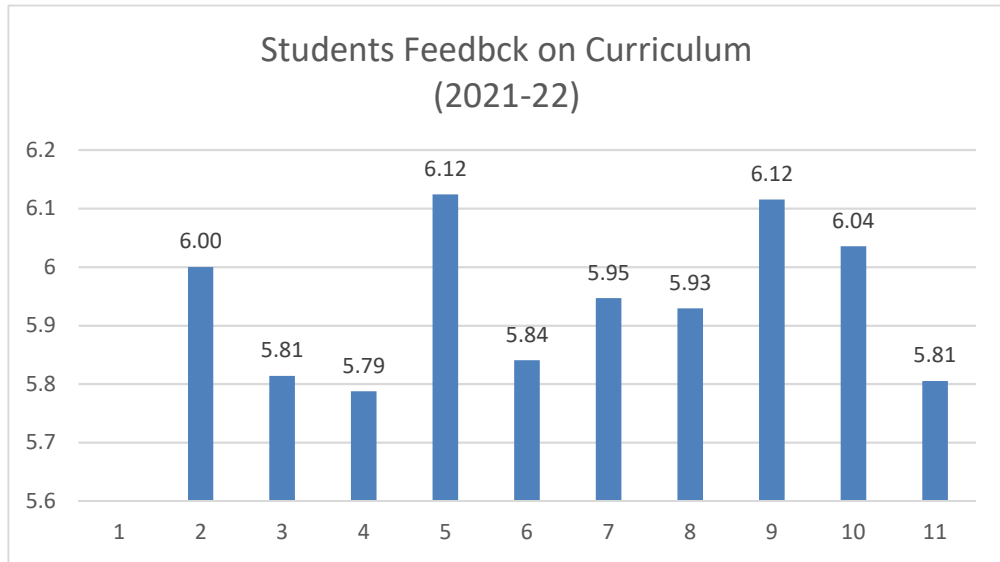
DA=Disagree

SDA= Strogly Disagree


Co-ordinator IQAC
LINGARAJ COLLEGE
BELAGAVI




PRINCIPAL
LINGARAJ COLLEGE
BELAGAVI



College
Co-ordinator IQAC
LINGARAJ COLLEGE
BELAGAVI



[Signature]
PRINCIPAL
LINGARAJ COLLEGE
BELAGAVI

K.L.E. Society's
LINGARAJ COLLEGE, BELAGAVI
(Autonomous)

Employers Feedback on Curriculum
(2021-22)

Methodology :

* Primary Data - Questionnaire Method

* Statistical Tools used : Weightage Method

SL. No.	Particulars	Response					Weighted Response				Sum of Weightage (ΣRW)	Score ($\Sigma RW/N$)
		SA	A	DA	SDA	Total (N)	4	3	2	1		
1	Curriculum helps to develop thinking ability	45	33	0	0	78	225	132	0	0	357	3.16
2	Curriculum helps in developing communication skills	47	29	1	1	78	235	116	3	2	356	3.15
3	Curriculum enhances Analytical skills	48	30	0	0	78	240	120	0	0	360	3.19
4	Curriculum focuses on multi-skill development	42	36	0	0	78	210	144	0	0	354	3.13
5	Curriculum emphasizes on global competencies	35	43	0	0	78	175	172	0	0	347	3.07
6	Curriculum builds employability and Entrepreneurial attitude amongst the students.	37	40	1		78	185	160	3	0	348	3.08
7	Curriculum boosts belongingness with Community	43	34	1	0	78	215	136	3	0	354	3.13
8	Curriculum has the potential in developing the habit of self-learning among the students	43	35	0	0	78	215	140	0	0	355	3.14

Note: SA= Strongly Agree

A= Agree

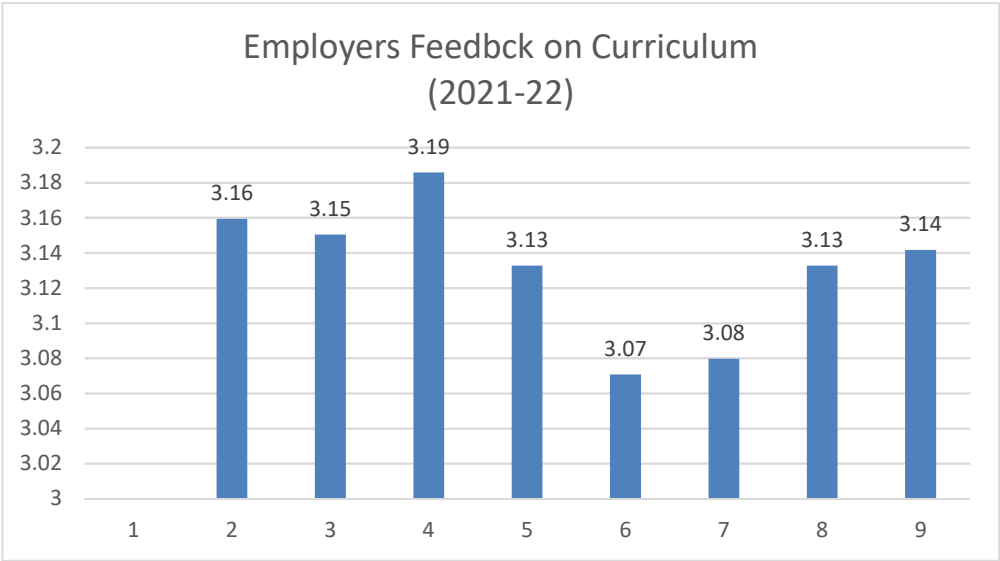
DA=Disagree

SDA= Strogly Disagree


Co-ordinator IQAC
LINGARAJ COLLEGE
BELAGAVI




PRINCIPAL
LINGARAJ COLLEGE
BELAGAVI



[Handwritten Signature]
Co-ordinator IQAC
LINGARAJ COLLEGE
BELAGAVI



[Handwritten Signature]
PRINCIPAL
LINGARAJ COLLEGE
BELAGAVI

K.L.E. Society's
LINGARAJ COLLEGE, BELAGAVI
(Autonomous)

Alumni Feedback on Curriculum
(2021-22)

Methodology :

* Primary Data - Questionnaire Method

* Statistical Tools used : Weightage Method

SL. No.	Particulars	Response					Weighted Response				Sum of Weightage (ΣRW)	Score ($\Sigma RW/N$)
		SA	A	DA	SDA	Total (N)	4	3	2	1		
1	The curriculum is up-to-date, need based & application oriented.	81	46	0	0	127	405	184	0	0	589	5.21
2	Whether syllabus is focusing on employability	65	58	4	0	127	325	232	12	0	569	5.04
3	Whether syllabus is focusing on entrepreneurship	83	33	11	0	127	415	132	33	0	580	5.13
4	Whether syllabus is focusing on skill development	81	45	1	0	127	405	180	3	0	588	5.20
5	Syllabus equipped me with necessary technical skills to face the industry	73	45	9	0	127	365	180	27	0	572	5.06
6	Curriculum encourages holistic development of the students	69	54	4	0	127	345	216	12	0	573	5.07
7	Learning objectives are clear and appropriate to the needs of the students	77	46	4	0	127	385	184	12	0	581	5.14
8	Curriculum covers issues like Human Values, Gender Equity, Professional Ethics, Environment and Sustainability etc.	81	44	2	0	127	405	176	6	0	587	5.19
9	Interest is generated by teacher while teaching	88	39	0	0	127	440	156	0	0	596	5.27
10	Curriculum helps to develop skills related to face competitive exams	77	45	5	0	127	385	180	15	0	580	5.13

Note: SA= Strongly Agree

A= Agree

DA=Disagree

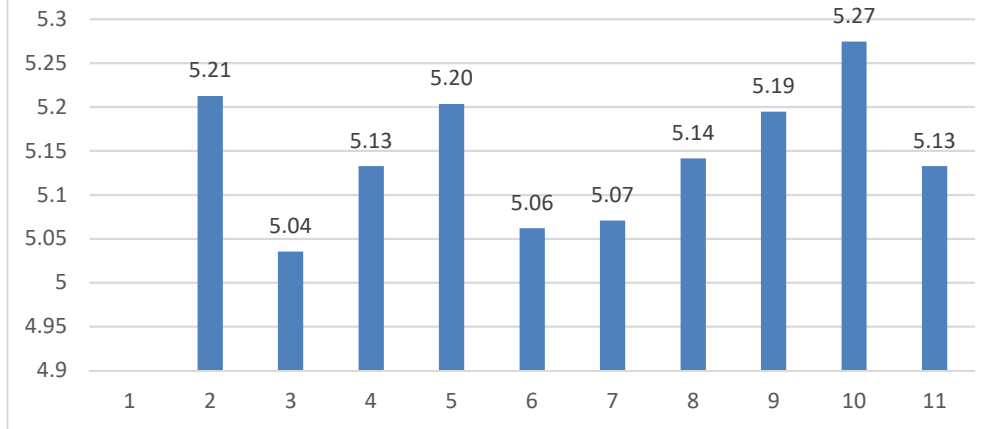
SDA= Strongly Disagree


Co-ordinator IQAC
LINGARAJ COLLEGE
BELAGAVI




PRINCIPAL
LINGARAJ COLLEGE
BELAGAVI

Alumni Feedback on Curriculum (2021-22)



College
Co-ordinator IQAC
LINGARAJ COLLEGE
BELAGAVI



[Signature]
PRINCIPAL
LINGARAJ COLLEGE
BELAGAVI